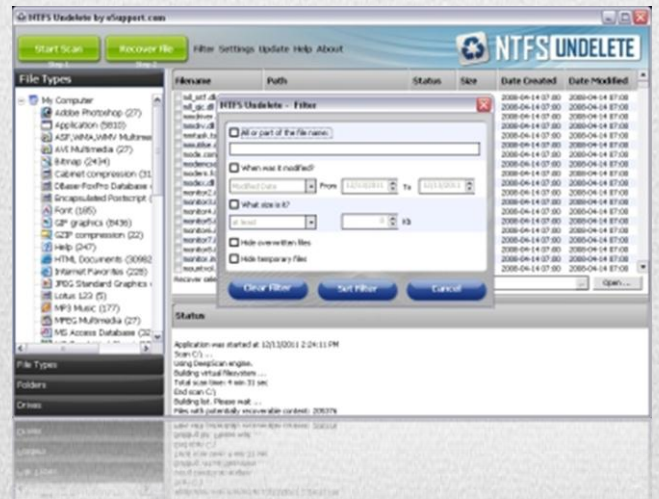
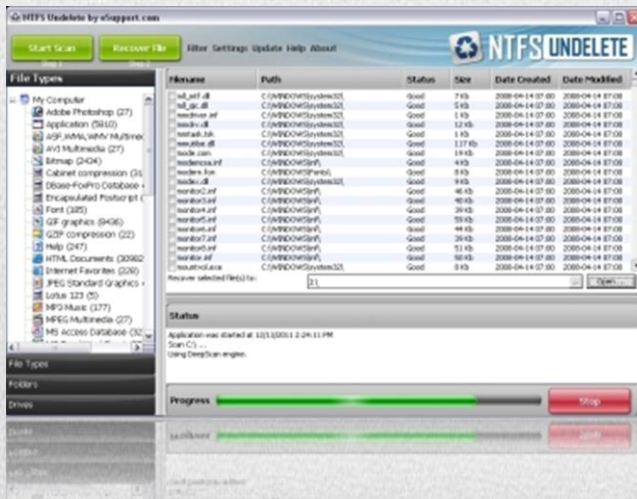


# NTFS Undelete User Manual



## What is NTFS Undelete?

NTFS Undelete is a small utility that scans your hard drive for all files that can be undeleted and attempts to recover them for you.

Sounds like magic? It isn't. You might not know it, but when you delete a file in Windows, your system does something like saying "OK, I am now going to consider this file null and void, and will allow other data writing operations to use the space that it occupies". In other words, no actual 'erasing' of the file occurs until Windows needs to write over the hard drive space where that file resides. NTFS Undelete uses this Windows behavior to your advantage and recovers files that are 'still there' on the hard drive and/or files that have enough data remaining intact, so that they can be recovered. The sooner you attempt to recover the files, the better your chances for successful recovery are.

### Overview

NTFS Undelete is a quick and effective way to retrieve deleted files, files removed from the Recycle Bin, in a DOS window, or from Windows Explorer with the SHIFT key held down. NTFS Undelete has a clean and easy to use interface, is small, fast, efficient, and powerful.

There's nothing like losing an important file you spent hours working on. Luckily, simply deleting a file doesn't mean it's gone for good. You can use NTFS Undelete to recover files that have been deleted. In most cases you'll have your files back in no time.

NTFS Undelete supports all Windows file systems for hard and floppy drives including FAT12/16/32, NTFS/NTFS5, and image recovery from CompactFlash, SmartMedia, multimedia and Secure Digital memory cards.

### NTFS Undelete does the following:

- Recovers deleted files from NTFS/NTFS5 and FAT12/FAT16/FAT32 volumes
- Restores deleted files on Windows 7, Windows 2008, Windows Vista, Windows 2003, and Windows XP

### More Features:

- After scanning your drive, NTFS Undelete creates file type icons in the left pane that allow you to easily filter by file type
- NTFS Undelete creates a folder view of the deleted files
- NTFS Undelete allows you to filter the results by size, date modified, date created, and parts of the files' names

- NTFS Undelete is small, fast, effective, and powerful

## System Requirements

NTFS Undelete requires Windows XP, Windows 2003, Windows Vista, Windows 2008, or Windows 7. Both 32-bit and 64-bit versions of Windows are supported.

## Installation

1. Download the latest version of NTFS Undelete from the [Download page](#)
2. Click the **Run** button in the popup window to launch the Installation Wizard



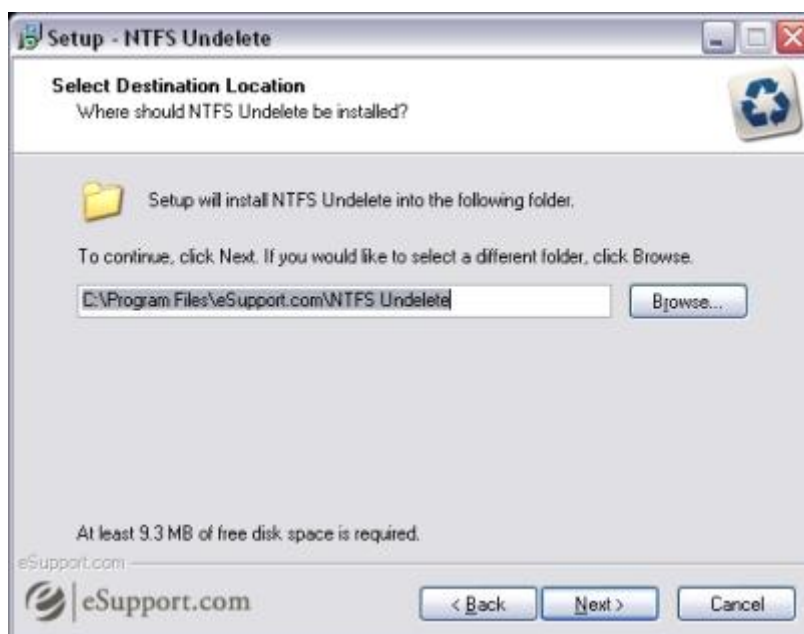
3. Click the **Next** button in the Installation Wizard



4. Read the End User License Agreement, select the **I accept the agreement** radio button, and then click on **Next** to continue with the installation



5. Click the **Next** button to accept the installation path for NTFS Undelete

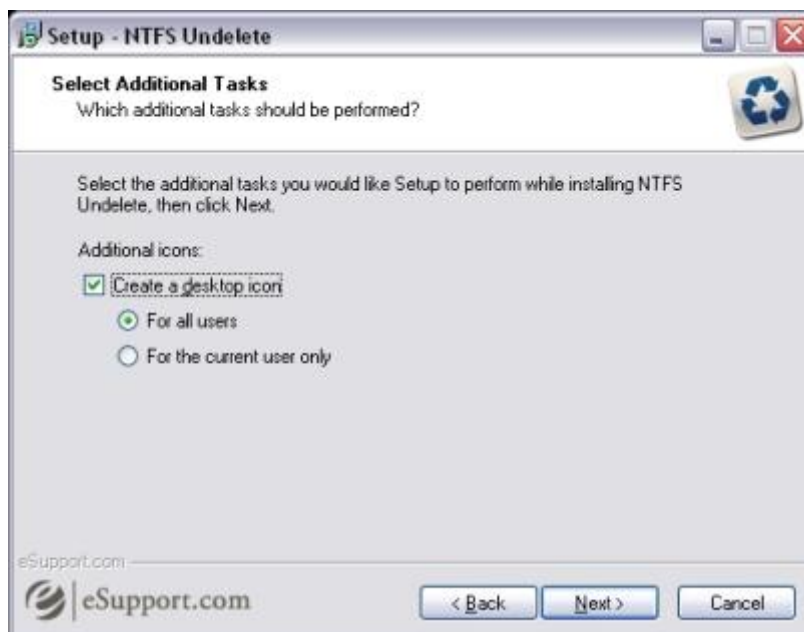


6. Click **Next** to install the eSupport Toolbar and to make Ask.com your home page. Otherwise uncheck the settings you do not wish to keep before clicking **Next**





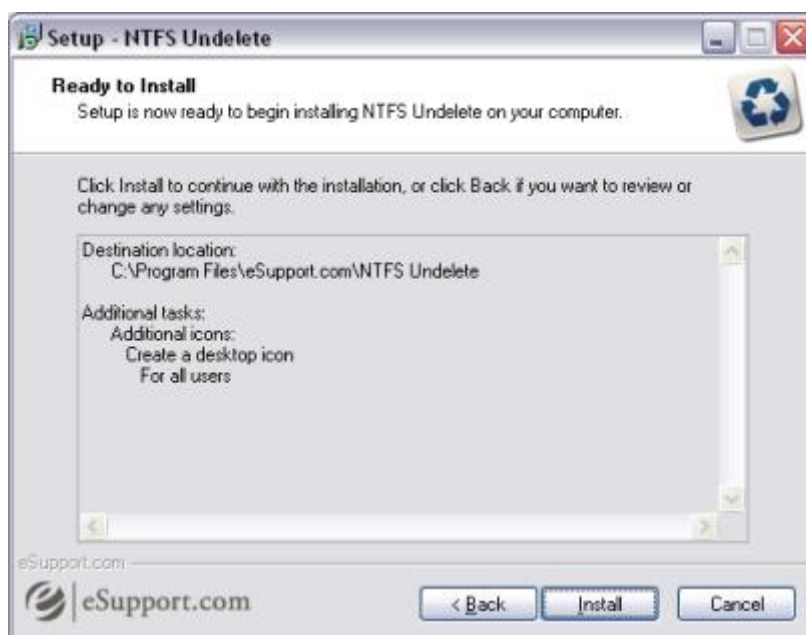
7. Select the **Create a desktop icon** checkbox if you want to be able to access NTFS Undelete from your desktop. You can also choose whether you want a desktop icon created for all users or the current user only



8. Read the warning regarding deleted files and then click the **Next** button



9. Click **Install** to begin the installation



## Using NTFS Undelete to Recover Your Files

NTFS Undelete is the program that will help you recover deleted files and photos, no matter how hard it is. Undeleting files with NTFS Undelete is quick and easy.

Before you proceed, make sure you install NTFS Undelete on a drive other than the one from which you are trying to recover. If that's not possible, try recovering files to a flash drive to prevent overwriting your deleted files.

## 1. Select the Drive to Scan

When you run NTFS Undelete, the drive selection pane will appear on the left-hand side of the application window. There you will be able to select the drive to scan (hard drive, digital camera, flash drive, etc.) by checking the checkbox next to the appropriate drive letter.



## 2. Scan the Drive

Click on the **Start Scan** button to scan the selected drives.



Once the scan is started, the progress bar will show you how long you have to wait for the scan to complete.



## 3. Manage the Results

When the scan is completed, NTFS Undelete will display the following information and options. Use these options to find the files you want to recover.

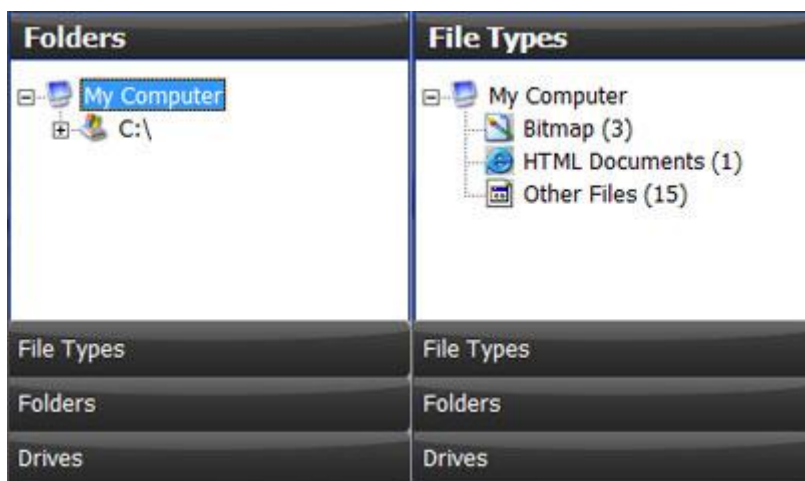
Filename	Path	Status	Size	Date Created	Date Modified
ml_inf.dll	C:\WINDOWS\system32\	Good	7 Kb	2008-04-14 07:00	2008-04-14 07:00
ml_gc.dll	C:\WINDOWS\system32\	Good	5 Kb	2008-04-14 07:00	2008-04-14 07:00
mmdriver.inf	C:\WINDOWS\system32\	Good	1 Kb	2008-04-14 07:00	2008-04-14 07:00
mmdrv.dll	C:\WINDOWS\system32\	Good	12 Kb	2008-04-14 07:00	2008-04-14 07:00
mmtask.tsk	C:\WINDOWS\system32\	Good	1 Kb	2008-04-14 07:00	2008-04-14 07:00
mmlife.dll	C:\WINDOWS\system32\	Good	117 Kb	2008-04-14 07:00	2008-04-14 07:00
mode.com	C:\WINDOWS\system32\	Good	19 Kb	2008-04-14 07:00	2008-04-14 07:00
modemca.inf	C:\WINDOWS\inf\	Good	4 Kb	2008-04-14 07:00	2008-04-14 07:00
modem.fon	C:\WINDOWS\fonts\	Good	8 Kb	2008-04-14 07:00	2008-04-14 07:00
modem.dll	C:\WINDOWS\system32\	Good	9 Kb	2008-04-14 07:00	2008-04-14 07:00
monitor2.inf	C:\WINDOWS\inf\	Good	46 Kb	2008-04-14 07:00	2008-04-14 07:00
monitor3.inf	C:\WINDOWS\inf\	Good	40 Kb	2008-04-14 07:00	2008-04-14 07:00
monitor4.inf	C:\WINDOWS\inf\	Good	39 Kb	2008-04-14 07:00	2008-04-14 07:00
monitor5.inf	C:\WINDOWS\inf\	Good	59 Kb	2008-04-14 07:00	2008-04-14 07:00
monitor6.inf	C:\WINDOWS\inf\	Good	44 Kb	2008-04-14 07:00	2008-04-14 07:00
monitor7.inf	C:\WINDOWS\inf\	Good	39 Kb	2008-04-14 07:00	2008-04-14 07:00
monitor8.inf	C:\WINDOWS\inf\	Good	51 Kb	2008-04-14 07:00	2008-04-14 07:00
monitor.inf	C:\WINDOWS\inf\	Good	50 Kb	2008-04-14 07:00	2008-04-14 07:00
mountvol.exe	C:\WINDOWS\system32\	Good	8 Kb	2008-04-14 07:00	2008-04-14 07:00

Recover selected file(s) to:

The "Folders" pane shows the folder structure of the deleted files for the drive(s) that you selected. In case folder name was destroyed, its name will appear like this: "Deleted XXXXX".

**Note:** The sub folders usually retain their original names

### The Folders and File Types Panes



**Folders:** Displays the folder(s) found by the program during scan.

**File Types:** The files found by the scan are placed into categories by file type. Any files that do not belong to a known file type are placed in the "Other Files" category. When a file type is selected, the files found in that category are displayed in the "Results Pane". You can sort the list of files in this pane by clicking on the column headings. When you click on a file name, its contents are displayed in the Preview pane.

To list all files found, click on "My Computer" in either the "File Types" or "Folders" pane.



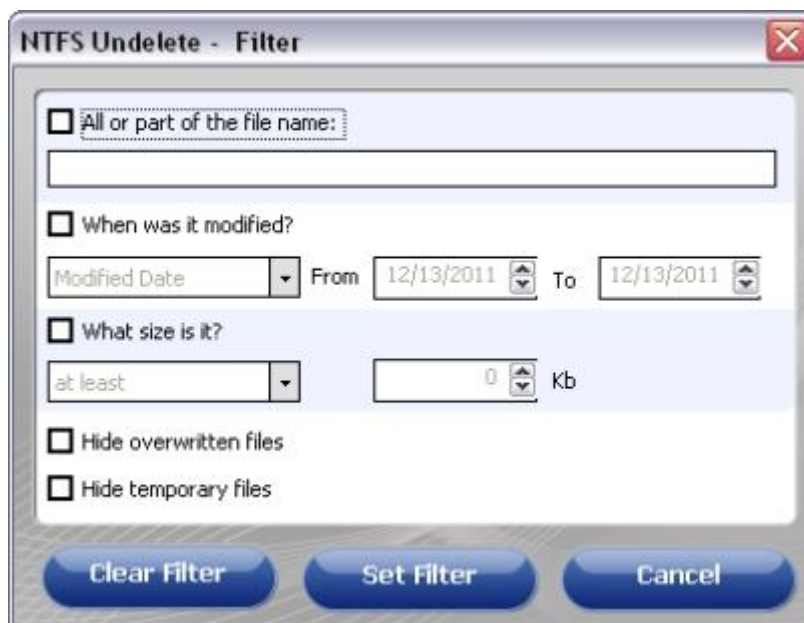
## Status and Preview



**Status:** The "Status" pane contains some basic information about the program and the files you are recovering.

**Preview:** Displays a preview of the potentially recoverable content.

## Filtering the Scan Results



The filter option is accessed by clicking the "Filter" button at the top of NTFS Undelete. Determine how you want NTFS Undelete to filter the results, then click the "Set Filter" button. To remove the filter click the "Clear" button.

### All or part of the file name:

Type all or part of the file name here.

**Note:** The filter will search for the characters you type anywhere in the file name,

including the file extension.

**Example 1:** doc

Typing the letters *doc* would display the following files in the "Results" pane if they were deleted:

todolist.doc  
todolist.doc.old  
documentation.txt  
WomanDoctor.jpg  
MyResume.docx

**Example 2:** .doc

Typing *.doc* would display the following files in the "Results" pane if they were deleted:

todolist.doc  
todolist.doc.old  
MyResume.docx

**When was it modified?**

Select this checkbox to filter the results based on the file creation date or the file modification date. Select a date type, Created or Modified from the dropdown menu, and then set an appropriate date range.

**What size is it?**

Select this checkbox to filter the results based on file size. Select "at least" or "at most" from the dropdown menu and then enter the approximate file size in the Kb field, or use the arrows to set the file size.

**Hide overwritten files**

Select this checkbox to filter out overwritten files.

**Hide temporary files**

Select this checkbox to filter out temporary files.

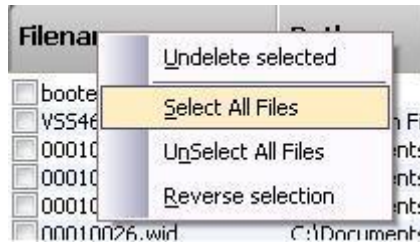
#### **4. Save Recovered Files**

When NTFS Undelete saves a recovered file, it reads the file's contents and then writes its contents to a new file with the same name.

**IMPORTANT!!!** Remember to save the files that you are recovering to a different drive to avoid the risk of overwriting other files that you want to recover. Later you can restore the recovered files to their original locations once you have recovered all the files you need.

## Complete the following steps to recover a deleted file:

1. In the "Results Pane" select the checkbox of the file or files to be recovered.



To select all files, right click on **Filename** then click on the **Select All Items** menu entry.

2. Click the **Recover File** button to recover selected files



3. Click on **Yes** in the "Possible Data Loss" popup box



Recovered files will be copied to the folder specified in the **Recover selected file(s) to:** section.

## Configuring NTFS Undelete

You can configure NTFS Undelete to fit your particular needs. The "Settings" window provides access to NTFS Undelete's configuration. Although the default NTFS Undelete configuration has been set to optimize your recovery experience, there may be times when you may want to fine-tune the program's settings. In this guide we've described all NTFS Undelete settings.



Default Settings

### **Check for updates**

Allows NTFS Undelete to check for updates when the program is launched. NTFS Undelete will check for updates weekly, every two weeks, or monthly.

### **Send bug reports to eSupport.com**

Help us make our products better. Let us know the problems you are experiencing, so we can fix them in the next version.

### **Disable scan popup on program exit**

Select this option if you don't want to be reminded about NTFS Undelete's advanced scan technologies when exiting NTFS Undelete.

### **Keep folder structure**

Restores files within their original folder tree using the specified drive path. This is very useful when restoring files from several different directories, as it allows you to see which folders the recovered files originally came from.

### **Restore original timestamps**

Restores files with the original Created and Modified dates. Unselect this option if you want to set the Created and Modified date and time to the date and time of the recovery.

## Enable FAT optimization

Use this options to optimize and speed up the recovery process.

## Check file Type/Header information (takes a long time)

This option ensures that the content of the file matches the file type. If not, this indicates that the file has been overwritten and will be omitted from the scan results.

## Enable SmartScan

SmartScan will analyze your drive sector by sector looking for the file types you have selected. The SmartScan does not depend on the file system, which makes it particularly useful after a drive has been formatted, or after an unrecoverable file system error has occurred.

**Note:** This scan will take longer than the default scan and can take a few hours to complete depending on your drive size.

## Enable DeepScan

DeepScan will analyze your drive cluster by cluster looking for files that may be available for recovery even after the drive has been formatted.

**Note:** This scan will take longer than the default scan and can take a few hours to complete depending on the size of your drive.

## DeepScan Engine Tuning

### Quality vs. Speed

If you have just deleted a file or files, setting the DeepScan to the highest Speed will most likely find and recover your file(s) very quickly. If you deleted the file(s) some time ago, or if the highest Speed setting does not recover your file(s), try using a slower/higher quality scan setting.

**Note:** The highest quality setting may take some time depending on the age of your PC and the size of your hard drive.

### Ignore current file system (RAW-scan)

Scans the selected drive(s) sector by sector and ignores any current file system data structure. This is especially useful when the following scenarios are true:

- The file system data structure has become corrupt or overwritten and some or all of the lost files cannot be found using the Standard Scan or Default DeepScan setting.
- It has been too long since the lost files were deleted and they cannot be identified due to overwritten file system data structures.
- Recently deleted files are not recovered with standard scan due to severe fragmentation that is common on FAT formatted drives.



### Detect existing files

Searches for non-deleted files on deleted partitions with undamaged file systems.

### Recover .UND files

Attempts to recover .UND files.

### Detect zero-sized files

Includes files with no byte count in the list of potentially recoverable files.

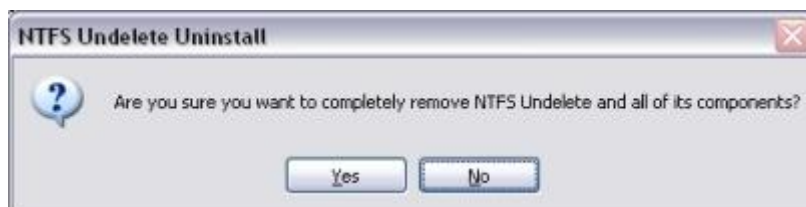
### Enable EFS restore feature

Recover files and/or folders that were encrypted using EFS prior to deletion. EFS encrypted files/folders can only be restored using the same user account that was used for the encryption of the file(s) or folder(s).

## Uninstalling NTFS Undelete

Complete the following steps to remove NTFS Undelete from your system:

1. Go to **Start > All Programs > eSupport.com > NTFS Undelete> Uninstall NTFS Undelete**
2. Click the **Yes** button to begin remove NTFS Undelete from your system



3. Click the **OK** button after NTFS Undelete has been removed from your system.

